



PRINCESS CRUISES
come back new®

2019

japan



discover timeless traditions

Retrace the steps of the mighty shogun warlords through medieval castles. Indulge in quiet reflection and harmony in a Zen garden. Embrace ancient temples in a neon-lit cityscape of towering skyscrapers, as the wisdom of old converges with the spirit of new. Allow yourself to stray far from the familiar yet feel right at home on an adventure through Japan and come back new.®



WHAT'S INSIDE

Explore the Ports	2
Cruises.	4
Cruisetours	13
Port Spotlights	14
The Princess Experience	17
Staterooms	21

extra savings for our valued past guests

LIMITED-TIME OFFER!

Book any of these vacations to enjoy Princess Cruises Captain's Circle™ Launch Savings

- An extra savings of up to \$200 per person*
- Enjoy a 2-for-1 deposit (10% of cruise fare)

Call your travel agent or contact Princess for details at 6922 6788

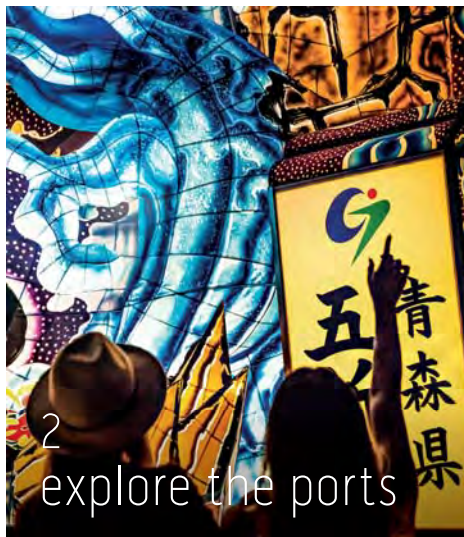
*Princess Cruises Captain's Circle Launch Savings of up to \$200 per person discount is applicable in all categories and combinable only with Launch Fares and Group Fares. Specific discount amounts vary by itinerary and cruise length. Regional and other past guest promotions or "new booking only" promotions are not combinable with the discount. Princess Cruises Captain's Circle Launch Savings is not applicable to third- and fourth-berth guests. Reduced deposit offer is 10% per person and does not apply to third- and fourth-berth guests. Reduced deposit is not combinable with other reduced deposit offers. Call 6922 6788 for details. Offer expires August 31, 2018, for late March to early November 2019 sailings. Promotion code is PA1.

*#1 International Cruise Line in Japan by Japan's CRUISE Magazine Readers' Poll.

The contents of this brochure are accurate as of the date of printing and are subject to change. Please refer to princess.com for the most up-to-date information.

art & culture

Japan's beloved culture touches your heart and awakens your soul. Be dazzled by ancient tales told through spirited music, drama and dance. Encounter the brilliant art and culture of Japan and introduce your eyes to an exotic new palette.



delightful festivals

Witness the booming sounds and blooming hues of over 10,000 vibrant pyrotechnics at the Kumano Fireworks Festival. Lose yourself to the spectacular excitement of glowing floats at the Aomori Nebuta Festival. Experience these ceremonies and invigorating festivals throughout your journey aboard Diamond Princess®.

see the extraordinary

Explore ancient castles. Experience complete harmony. Be immersed into foreign lands and cities rich with history when you discover unforgettable UNESCO World Heritage sites.



more ashore

Our itineraries are crafted to give you more opportunities to experience the history, culture and flavors of the region. With port calls that are **LATE NIGHT** (departing 9 p.m. or later), you can see the sights during the day and experience the nightlife in the evening.

SHARE YOUR STORY

Connect with Princess and fellow guests via Facebook, YouTube, Instagram, Twitter, Pinterest and Google+.

Share stories of your Princess adventures, watch videos and much more.



#comebacknew

explore the ports

Ancient shrines celebrating tranquility. Towering skyscrapers overlooking bustling crowds. Two contrasting visions of a country steeped in tradition, but still flourishing with technology. Japan's rich heritage is felt every time you explore one of its stunning temples, yet flashing neon signs atop ultra-modern architecture is just as iconic to parts of this island nation.



Hakodate

One of the main cities on the island of Hokkaido, Hakodate is home to Mount Hakodate, where you'll enjoy spectacular, breathtaking views after a ride to the top via cable car. At its base is Motomachi, a neighborhood of Western-style, early-20th-century buildings.



Akita

Enjoy a More Ashore Late Night stay in Akita and experience the popular Akita Kanto Festival, held in August. In hope of good harvest, the festival features a procession of 200 bamboo poles with lanterns weighing over 100 pounds, carried on the foreheads or shoulders of the celebrants.

©Yasufumi Nishi/©JNTO



Busan

Melding ancient history with contemporary life, Busan is a bustling metropolis and South Korea's second-most populous city. Not only does it offer an exciting city vibe, but you'll also find gorgeous beaches, mountainous terrain and traditional seafood dishes.



Kagoshima

Home to the great Sakurajima, a well-known active volcano that faces Kinko Bay, Kagoshima is located on the Ōsumi Peninsula, which boasts a chain of active and dormant volcanoes.



Kochi

Located at the head of Urado Bay, the city of Kochi is the political, cultural, economic and trading center of the prefecture. It's also home to the Kochi Yosakoi Dance Festival, which features energetic dancers carrying "naruko" wooden clappers.



Aomori

Experience the Nebuta Festival, held in early August, and marvel at the massive illuminated Nebuta float figures shaped like famous historical and mythological Japanese characters. Traditional music performances and vibrant dancers are also key aspects of the famous event.



Kanazawa

Discover the traditional Higashi Chaya District in Kanazawa, which features teahouses where geisha perform, as well as a multitude of shopping, entertainment and historical buildings.



Tokushima

The Tokushima Awa Dance Festival is one of the most famous summer dance festivals, dating back to the 1500s. It features dancers performing throughout the city well into the night and is known for the famous "Fool's Dance."

©Tokushima Prefecture/©JNTO

discover japan's five main islands



©Yasufumi Nishi/©JNTO

HONSHU: The country's largest island is home to its largest cities, including Tokyo, Kyoto and Osaka.

KYUSHU: The southwestern island is known for its active volcanoes, beaches and natural hot springs.

RYUKYU ISLANDS: This treasure trove south of Japan's main islands includes Okinawa, the birthplace of karate, and Ishigaki, a tropical paradise known for its turquoise waters.



HOKKAIDO: Japan's second-largest island features spectacular mountains and volcanic plateaus. A city offering a stunning array of native fish dishes, Hakodate is the producer of incredibly high-quality sushi.

SHIKOKU: The smallest of Japan's major islands, Shikoku features a mountainous interior with various hiking trails and rivers with whitewater rapids.

two ways to sail



CRUISE FROM TOKYO (YOKOHAMA)

From captivating architecture to meticulously maintained gardens, shrines and temples, Tokyo never fails to delight and inspire. Learn about the miraculous legend surrounding Sensoji, Tokyo's oldest temple; savor the perfect cup of tea during a traditional tea ceremony; or peer into steaming sulfur springs inside Japan's famed Fuji-Hakone-Izu National Park, home of Mount Fuji.

Turn to page 23 for travel tips.

CRUISE FROM KOBE

Located on Osaka Bay, this prominent port is not only known for its signature beef but also as the gateway to the splendid sights of ancient Kyoto, a UNESCO World Heritage Site, Osaka and Nara. From this port, you can access Nara, once considered the cradle of Japanese art and home to the immense Todaiji Temple, which holds the bronze Buddha statue nearly 50 feet tall.

spring flowers cruises

Japan's gardens and parks are awash in colors when spring flowers are in bloom. Wander under canopies in Kochi, where you can stroll amongst a striking scene of blossoms surrounding Kochi Castle. Or enjoy a More Ashore Late Night night stay in South Korea's Busan, allowing extra time to savor traditional Korean barbecue and explore the city's colorful markets.

marvel

Cherry blossoms, or *sakura*, are one of the most enduring symbols of Japan. Each spring, the country becomes awash with pink and white petals. The bloom begins in the south and sweeps to the north, making for a time of celebration and reflection in every corner of the nation.



Spring Flowers

Roundtrip from Tokyo

8 days



Tokyo (Yokohama) > Gamagori > Osaka (for Kyoto) > Kochi > Busan > Yokkaichi > Tokyo (Yokohama)

Interior fares from*	Balcony fares from*	Mini-Suite fares from*	Club Class fares from*	Suite fares from*
\$1,956	\$3,104	\$3,711	\$4,386	\$6,884

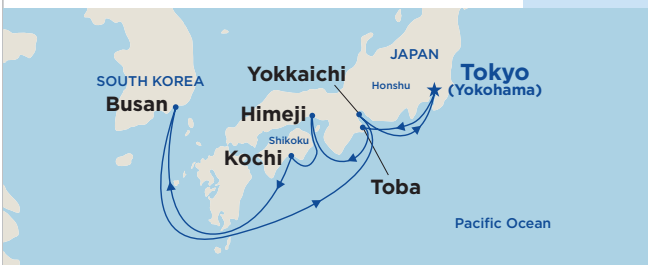
2019 DEPARTURE | *Diamond Princess*[®]
Mar 26 TUE

*Taxes, Fees and Port Expenses of up to \$142 are additional and subject to change. See page 14 for more details.

Spring Flowers

Roundtrip from Tokyo

8 days



Tokyo (Yokohama) > Toba > Himeji > Kochi > Busan > Yokkaichi > Tokyo (Yokohama)

Interior fares from*	Balcony fares from*	Mini-Suite fares from*	Club Class fares from*	Suite fares from*
\$1,956	\$3,104	\$3,711	\$4,386	\$6,884

2019 DEPARTURE | *Diamond Princess*[®]
Apr 3 WED

*Taxes, Fees and Port Expenses of up to \$142 are additional and subject to change. See page 14 for more details.

Spring Flowers

Roundtrip from Tokyo

8 days



Tokyo (Yokohama) > Ishinomaki > Hakodate > Niigata > Busan > Kagoshima > Tokyo (Yokohama)

Interior fares from*	Balcony fares from*	Mini-Suite fares from*	Club Class fares from*	Suite fares from*
\$1,956	\$3,104	\$3,711	\$4,386	\$6,884

2019 DEPARTURE | *Diamond Princess*[®]
Apr 11 THU

*Taxes, Fees and Port Expenses of up to \$122 are additional and subject to change. See page 14 for more details.

more ashore

See the sights during the day and experience the nightlife after dark with Late Night (9 p.m. or later) calls.

“...An easier, cheaper way to tour Japan.”

— GENE SLOAN, USA TODAY

Spring Flowers

Roundtrip from Tokyo

8 days



Tokyo (Yokohama) > Kanmon Straits scenic cruising > Busan **LATE NIGHT** > Sakata > Aomori > Miyako > Tokyo (Yokohama)

Interior fares from [^]	Balcony fares from [^]	Mini-Suite fares from [^]	Club Class fares from [^]	Suite fares from [^]
\$1,956	\$3,104	\$3,711	\$4,386	\$6,884

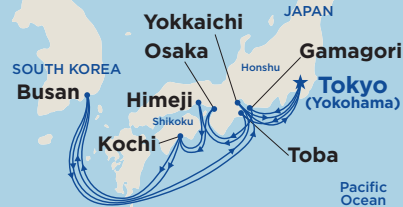
2019 DEPARTURE | *Diamond Princess*[®]
Apr 19 FRI

[^]Taxes, Fees and Port Expenses of up to \$115 are additional and subject to change. See page 14 for more details.

Grand Spring Flowers

Roundtrip from Tokyo

16 days



Tokyo (Yokohama) > Gamagori > Osaka (for Kyoto) > Kochi > Busan > Yokkaichi > Tokyo (Yokohama) > Toba > Himeji > Kochi > Busan > Yokkaichi > Tokyo (Yokohama)

Interior fares from [^]	Balcony fares from [^]	Mini-Suite fares from [^]	Club Class fares from [^]	Suite fares from [^]
\$3,779	\$6,074	\$7,289	\$8,639	\$13,634

2019 DEPARTURE | *Diamond Princess*[®]
Mar 26 TUE

[^]Taxes, Fees and Port Expenses of up to \$284 are additional and subject to change. See page 14 for more details.

Grand Spring Flowers

Roundtrip from Tokyo

16 days



Tokyo (Yokohama) > Toba > Himeji > Kochi > Busan > Yokkaichi > Tokyo (Yokohama) > Ishinomaki > Hakodate > Niigata > Busan > Kagoshima > Tokyo (Yokohama)

Interior fares from [^]	Balcony fares from [^]	Mini-Suite fares from [^]	Club Class fares from [^]	Suite fares from [^]
\$3,779	\$6,074	\$7,289	\$8,639	\$13,634

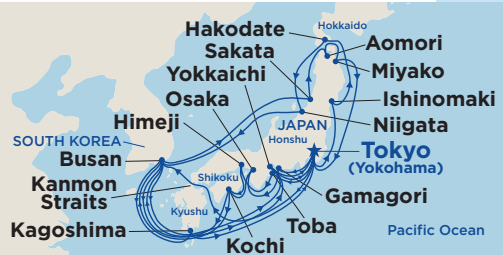
2019 DEPARTURE | *Diamond Princess*[®]
Apr 3 WED

[^]Taxes, Fees and Port Expenses of up to \$256 are additional and subject to change. See page 14 for more details.

Grand Spring Flowers

Roundtrip from Tokyo

32 days



Tokyo (Yokohama) > Gamagori > Osaka (for Kyoto) > Kochi > Busan > Yokkaichi > Tokyo (Yokohama) > Toba > Himeji > Kochi > Busan > Yokkaichi > Tokyo (Yokohama) > Ishinomaki > Hakodate > Niigata > Busan > Kagoshima > Tokyo (Yokohama) > Kanmon Straits scenic cruising > Busan **LATE NIGHT** > Sakata > Aomori > Miyako > Tokyo (Yokohama)

Interior fares from [^]	Balcony fares from [^]	Mini-Suite fares from [^]	Club Class fares from [^]	Suite fares from [^]
\$7,356	\$11,946	\$14,376	\$17,009	\$27,674

2019 DEPARTURE | *Diamond Princess*[®]
Mar 26 TUE

[^]Taxes, Fees and Port Expenses of up to \$513 are additional and subject to change. See page 14 for more details.

summer festival cruises

Imagine a festival above the sea that features over 10,000 fireworks against an ink-black sky. A procession of massive floats festooned with famous characters lit by lanterns. Sail during the summer and experience a cavalcade of unique and awe-inspiring festivals, never to be forgotten.



dazzle

Summer in Japan is *hanabi* — “fire flower” — season. And throughout the country, fireworks displays light up the night sky. Some fireworks festivals feature sparkling displays set off from boats on lakes, some are dedicated to gods, while others are contests. From your ship, witness the stunning Kumano Fireworks Festival on select sailings.

Northern Japan with Nebuta Festival

Roundtrip from Tokyo

8 days



[more ashore](#)

Tokyo (Yokohama) > Ishinomaki > Hakodate **LATE NIGHT** > Vladivostok > Aomori **LATE NIGHT** > Tokyo (Yokohama)

Interior fares from*	Balcony fares from*	Mini-Suite fares from*	Club Class fares from*	Suite fares from*
\$2,226	\$3,374	\$4,656	\$5,466	\$7,829

2019 DEPARTURE | *Diamond Princess*®
Jul 27 SAT

*Taxes, Fees and Port Expenses of up to \$135 are additional and subject to change. See page 14 for more details.

Circle Japan with Nebuta & Summer Festivals

Roundtrip from Tokyo

11 days



[more ashore](#)

Tokyo (Yokohama) > Akita **LATE NIGHT** > Aomori **LATE NIGHT** > Sakaiminato > Busan > Kanmon Straits scenic cruising > Kochi **LATE NIGHT** > Tokushima **LATE NIGHT** > Tokyo (Yokohama)

Interior fares from*	Balcony fares from*	Mini-Suite fares from*	Club Class fares from*	Suite fares from*
\$3,036	\$4,521	\$5,871	\$6,884	\$10,664

2019 DEPARTURE | *Diamond Princess*®
Aug 4 SUN

*Taxes, Fees and Port Expenses of up to \$175 are additional and subject to change. See page 14 for more details.

Southern Islands & Northern Japan with Nebuta Festival

Roundtrip from Tokyo

16 days



[more ashore](#)

Tokyo (Yokohama) > Okinawa > Miyakojima > Taipei (Keelung) > Tokyo (Yokohama) > Ishinomaki > Hakodate **LATE NIGHT** > Vladivostok > Aomori **LATE NIGHT** > Tokyo (Yokohama)

Interior fares from*	Balcony fares from*	Mini-Suite fares from*	Club Class fares from*	Suite fares from*
\$4,049	\$6,344	\$8,234	\$9,719	\$14,579

2019 DEPARTURE | *Diamond Princess*®
Jul 19 FRI

*Taxes, Fees and Port Expenses of up to \$256 are additional and subject to change. See page 14 for more details.

[more ashore](#)

See the sights during the day and experience the nightlife after dark with Late Night (9 p.m. or later) calls.

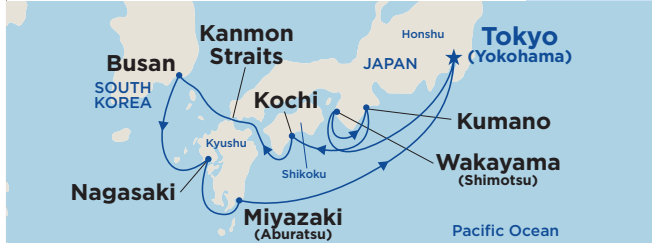
“Diamond Princess® sailing wiped away the hassles of a Japan trip, delivering us to the doorstep of multiple destinations.”

— GENE SLOAN, USA TODAY

Japan Explorer with Kumano Fireworks

Roundtrip from Tokyo

8 days



more ashore

Tokyo (Yokohama) > Wakayama (Shimotsu) **LATE NIGHT** > Kumano (scenic cruising for Kumano Fireworks Festival viewing) > Kochi > Kanmon Straits scenic cruising > Busan **LATE NIGHT** > Nagasaki > Miyazaki (Aburatsu) > Tokyo (Yokohama)

Interior fares from*	Balcony fares from*	Mini-Suite fares from*	Club Class fares from*	Suite fares from*
\$2,226	\$3,374	\$4,656	\$5,466	\$7,829

2019 DEPARTURE | *Diamond Princess®*
Aug 15 THU

*Taxes, Fees and Port Expenses of up to \$135 are additional and subject to change. See page 14 for more details.

Grand Japan with Kumano Fireworks

Roundtrip from Tokyo

17 days



more ashore

Tokyo (Yokohama) > Wakayama (Shimotsu) **LATE NIGHT** > Kumano (scenic cruising for Kumano Fireworks Festival viewing) > Kochi > Kanmon Straits scenic cruising > Busan **LATE NIGHT** > Nagasaki > Miyazaki (Aburatsu) > Tokyo (Yokohama) > Toba > Takamatsu > Busan > Sakaiminato > Kanazawa > Sakata > Tokyo (Yokohama)

Interior fares from*	Balcony fares from*	Mini-Suite fares from*	Club Class fares from*	Suite fares from*
\$4,454	\$6,884	\$9,246	\$10,866	\$16,064

2019 DEPARTURE | *Diamond Princess®*
Aug 15 THU

*Taxes, Fees and Port Expenses of up to \$351 are additional and subject to change. See page 14 for more details.

Grand Japan with Nebuta & Summer Festivals

Roundtrip from Tokyo

19 days



more ashore

Tokyo (Yokohama) > Ishinomaki > Hakodate **LATE NIGHT** > Vladivostok > Aomori **LATE NIGHT** > Tokyo (Yokohama) > Akita **LATE NIGHT** > Aomori **LATE NIGHT** > Sakaiminato > Busan > Kanmon Straits scenic cruising > Kochi **LATE NIGHT** > Tokushima **LATE NIGHT** > Tokyo (Yokohama)

Interior fares from*	Balcony fares from*	Mini-Suite fares from*	Club Class fares from*	Suite fares from*
\$5,129	\$7,761	\$10,394	\$12,216	\$18,359

2019 DEPARTURE | *Diamond Princess®*
Jul 27 SAT

*Taxes, Fees and Port Expenses of up to \$304 are additional and subject to change. See page 14 for more details.

Grand Japan with Nebuta, Kumano Fireworks & Summer Festivals

Roundtrip from Tokyo

19 days



more ashore

Tokyo (Yokohama) > Akita **LATE NIGHT** > Aomori **LATE NIGHT** > Sakaiminato > Busan > Kanmon Straits scenic cruising > Kochi **LATE NIGHT** > Tokushima > Wakayama (Shimotsu) **LATE NIGHT** > Kumano (scenic cruising for Kumano Fireworks Festival viewing) > Kochi > Kanmon Straits scenic cruising > Busan > Nagasaki > Miyazaki (Aburatsu) > Tokyo (Yokohama)

Interior fares from*	Balcony fares from*	Mini-Suite fares from*	Club Class fares from*	Suite fares from*
\$5,129	\$7,761	\$10,394	\$12,216	\$18,359

2019 DEPARTURE | *Diamond Princess®*
Aug 4 SUN

*Taxes, Fees and Port Expenses of up to \$294 are additional and subject to change. See page 14 for more details.

hokkaido cruises

Discover the natural beauty of Hokkaido, the northernmost of Japan's main islands, known for its volcanoes, hot springs (*onsen*) and protected wildlife. Here you'll have the opportunity to experience the thrill of the Mt. Hakodate Aerial Tram, where you can board a large gondola and be whisked into the clouds to the summit observation deck.



Mt. Hakodate, Hokkaido, Japan

Circle Hokkaido

Roundtrip from Tokyo

8 days

Tokyo (Yokohama) > Kushiro > Korsakov (Yuzhno-Sakhalinsk) > Otaru > Hakodate LATE NIGHT > Tokyo (Yokohama)

Interior fares from*	Balcony fares from*	Mini-Suite fares from*	Club Class fares from*	Suite fares from*
\$1,956	\$3,104	\$3,711	\$4,386	\$6,884

2019 DEPARTURES | *Diamond Princess®*
Jul 11 THU | Sep 1 SUN

*Fares based on 7/11/19 sailing. Fares for other dates may vary. Taxes, Fees and Port Expenses of up to \$142 are additional and subject to change. See page 14 for more details.

Fall Foliage Circle Hokkaido

Roundtrip from Tokyo

8 days

Tokyo (Yokohama) > Kushiro > Korsakov (Yuzhno-Sakhalinsk) > Otaru > Hakodate LATE NIGHT > Tokyo (Yokohama)

Interior fares from*	Balcony fares from*	Mini-Suite fares from*	Club Class fares from*	Suite fares from*
\$1,956	\$3,104	\$3,711	\$4,386	\$6,884

2019 DEPARTURE | *Diamond Princess®*
Oct 7 MON

*Taxes, Fees and Port Expenses of up to \$149 are additional and subject to change. See page 14 for more details.

more ashore

See the sights during the day and experience the nightlife after dark with Late Night (9 p.m. or later) calls.

southern islands & japan explorer cruises

Take a glimpse into the past by discovering Okinawa's historic and cultural treasures. The ancient castles of feudal lords and mighty samurai warriors loom upon the horizon. The winds of time swirl within Peace Memorial Park and throughout World War II memorial sites. Your ship will cross gentle seas toward Ishigaki and the shores of Taiwan before reaching Kobe or Tokyo.

captivate

Considered one of the most idyllic places in Japan, Ishigaki Kabira Bay sparkles with green- and blue-hued waters. The Bay is also one of only two black pearl cultivation sites in Japan, and because of this, swimming is not allowed. However, you can experience underwater sites via glass-bottomed boat, admiring the crystal-clear waters, colorful fish and diverse coral from above.



Kabira Bay, Ishigaki, Japan

Southern Islands

Roundtrip from Tokyo

8 days



Tokyo (Yokohama) > Okinawa > Ishigaki > Taipei (Keelung) > Tokyo (Yokohama)

Interior fares from*	Balcony fares from*	Mini-Suite fares from*	Club Class fares from*	Suite fares from*
\$1,956	\$3,104	\$3,711	\$4,386	\$6,884

2019 DEPARTURES | *Diamond Princess®*
Jul 3 WED | Jul 19* FRI | Nov 4 MON

*Taxes, Fees and Port Expenses of up to \$128 are additional and subject to change. See page 14 for more details.
*Miyakojima replaces Ishigaki.

more ashore

See the sights during the day and experience the nightlife after dark with Late Night (9 p.m. or later) calls.

Southern Islands & Hokkaido

Roundtrip from Tokyo

16 days



more ashore

Tokyo (Yokohama) > Okinawa > Ishigaki > Taipei (Keelung) > Tokyo (Yokohama) > Kuroshio > Korsakov (Yuzhno-Sakhalinsk) > Otaru > Hakodate **LATE NIGHT** > Tokyo (Yokohama)

Interior fares from*	Balcony fares from*	Mini-Suite fares from*	Club Class fares from*	Suite fares from*
\$3,779	\$6,074	\$7,289	\$8,639	\$13,634

2019 DEPARTURES | *Diamond Princess®*
Jul 3 WED | Jul 11* THU

*Taxes, Fees and Port Expenses of up to \$263 are additional and subject to change. See page 14 for more details.
*Miyakojima replaces Ishigaki, port order varies.

Japan Explorer

Roundtrip from Kobe

7 days

Kobe > Kochi > Hiroshima > Matsuyama > Miyazaki (Aburatsu) > Busan LATE NIGHT > Kanmon Straits scenic cruising > Kobe

Interior fares from*	Balcony fares from*	Mini-Suite fares from*	Club Class fares from*	Suite fares from*
\$1,754	\$2,699	\$3,306	\$3,914	\$6,074

2019 DEPARTURES | *Diamond Princess®*
May 18 SAT | Jun 1* SAT

*Taxes, Fees and Port Expenses of up to \$162 are additional and subject to change. See page 14 for more details.
*Kagoshima replaces Hiroshima, port order varies.

Southern Islands

Roundtrip from Kobe

7 days

Kobe > Okinawa > Ishigaki > Taipei (Keelung) > Kobe

Interior fares from*	Balcony fares from*	Mini-Suite fares from*	Club Class fares from*	Suite fares from*
\$1,754	\$2,699	\$3,306	\$3,914	\$6,074

2019 DEPARTURES | *Diamond Princess®*
May 11* SAT | May 25 SAT | Jun 8 SAT

*Taxes, Fees and Port Expenses of up to \$142 are additional and subject to change. See page 14 for more details.
*Miyakojima replaces Ishigaki.

Southern Islands Explorer

Roundtrip from Kobe

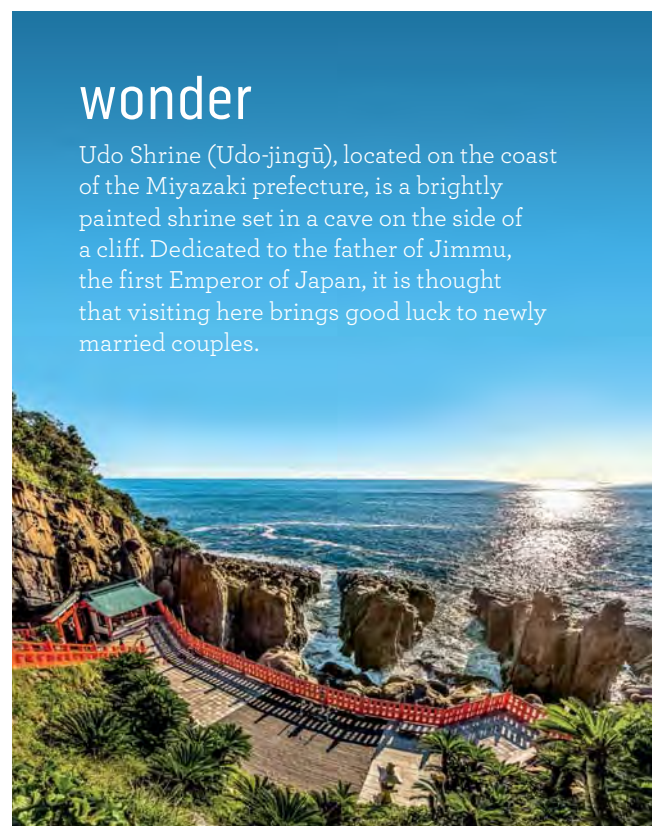
14 days

Kobe > Kochi > Hiroshima > Matsuyama > Miyazaki (Aburatsu) > Busan LATE NIGHT > Kanmon Straits scenic cruising > Kobe > Okinawa > Ishigaki > Taipei (Keelung) > Kobe

Interior fares from*	Balcony fares from*	Mini-Suite fares from*	Club Class fares from*	Suite fares from*
\$3,374	\$5,264	\$6,479	\$7,694	\$12,014

2019 DEPARTURES | *Diamond Princess®*
May 11* SAT | May 25* SAT
May 18 SAT | Jun 1* SAT

*Taxes, Fees and Port Expenses of up to \$304 are additional and subject to change. See page 14 for more details.
*Kagoshima replaces Hiroshima, port order varies.
*Miyakojima replaces Ishigaki, port order varies.



wonder

Udo Shrine (Udo-jingū), located on the coast of the Miyazaki prefecture, is a brightly painted shrine set in a cave on the side of a cliff. Dedicated to the father of Jimmu, the first Emperor of Japan, it is thought that visiting here brings good luck to newly married couples.

sea of japan & circle japan cruises

The gentle elegance of quaint fishing villages. The romance of a medieval samurai town. Enjoy the ease of experiencing Japan from every coast as you circumnavigate the country. From Toba to Sakiminato, you'll explore all that Japan's rich diversity has to offer on our Sea of Japan & Circle Japan cruises.



Matsue Castle, Shimane Prefecture, Japan (Sakaiminato)

Sea of Japan

Roundtrip from Tokyo

9 days



Tokyo (Yokohama) > Toba > Takamatsu > Busan > Sakaiminato > Kanazawa > Sakata > Tokyo (Yokohama)

Interior fares from*	Balcony fares from*	Mini-Suite fares from*	Club Class fares from*	Suite fares from*
\$2,361	\$3,644	\$4,724	\$5,534	\$8,369

2019 DEPARTURES | *Diamond Princess®*
Aug 23 FRI | Sep 23 MON

*Taxes, Fees and Port Expenses of up to \$216 are additional and subject to change. See page 14 for more details.

Circle Japan

Roundtrip from Tokyo

9 days



more ashore

Tokyo (Yokohama) > Ishinomaki > Hakodate **LATE NIGHT** > Maizuru (for Kyoto) > Busan > Kanmon Straits scenic cruising > Hiroshima > Tokyo (Yokohama)

Interior fares from*	Balcony fares from*	Mini-Suite fares from*	Club Class fares from*	Suite fares from*
\$2,361	\$3,644	\$4,724	\$5,534	\$8,369

2019 DEPARTURE | *Diamond Princess®*
Sep 9 MON

*Taxes, Fees and Port Expenses of up to \$169 are additional and subject to change. See page 14 for more details.

more ashore

See the sights during the day and experience the nightlife after dark with Late Night (9 p.m. or later) calls.

Circle Japan

Roundtrip from Kobe

8 days



more ashore

Kobe > Hakodate **LATE NIGHT** > Sakata > Kanazawa > Sakaiminato > Busan > Kobe

Interior fares from*	Balcony fares from*	Mini-Suite fares from*	Club Class fares from*	Suite fares from*
\$1,956	\$3,104	\$3,711	\$4,386	\$7,019

2019 DEPARTURE | *Diamond Princess®*
Jun 20 THU

*Taxes, Fees and Port Expenses of up to \$169 are additional and subject to change. See page 14 for more details.

cruisetours

Japan's cultural treasures and spectacular scenic wonders come to life during two unforgettable itineraries that combine a multiple-night land tour with your cruise. Our Highlights of Japan cruisetour visits popular cities such as Kyoto and Tokyo, while Temples & Traditions immerses you in Japan's rich history.



Highlights of Japan
Cruisetour

tour 3

13, 14, 16
or **20** nights

2 nights Kyoto, Japan > **3 nights Tokyo, Japan** > **9-day Circle Japan cruise** (see page 12), **8-day Circle Hokkaido cruise** (see page 9), **8-day Fall Foliage Circle Hokkaido cruise** (see page 8), **11-day Circle Japan cruise with Nebuta & Summer Festivals** (see page 6), **15-day China, Taiwan and Vietnam cruise** (see page 13), **9-day Sea of Japan cruise** (see page 12) or **8-day Southern Islands cruise** (see page 10)

Interior fares from*	Balcony fares from*	Mini-Suite fares from*	Club Class fares from*	Suite fares from*
\$6,006	\$7,154	\$7,761	\$8,436	\$10,934

2019 DEPARTURES

Diamond Princess®
 Jun 28 TOUR 3A
 Jul 6 TOUR 3A
 Jul 30 TOUR 3C
 Aug 18 TOUR 3B

Aug 27 TOUR 3A
 Sep 4 TOUR 3B
 Sep 18 TOUR 3B
 Oct 2 TOUR 3A

Oct 10 TOUR 3D
 Oct 30 TOUR 3A

Tour 3A includes 8-day Southern Islands cruise shown on page 10, 8-day Fall Foliage Circle Hokkaido cruise shown on page 8 or 8-day Circle Hokkaido cruise shown on page 9. Tour 3B includes 9-day Circle Japan cruise shown on page 12 or 9-day Sea of Japan cruise shown on page 12. Tour 3C includes 11-day Circle Japan with Nebuta & Summer Festivals cruise shown on page 6. Tour 3D includes 15-day China, Taiwan & Vietnam cruise shown on page 13.

*Fares based on 6/28/19 sailing. Fares for other dates may vary. Taxes, Fees and Port Expenses of up to \$250 are additional and subject to change. See below for more details.

Temples & Traditions
Cruisetour

tour 4

15 or 18 nights

2 nights Kyoto, Japan > **2 nights Kanazawa, Japan** > **3 nights Tokyo, Japan** > **8-day Fall Foliage Circle Hokkaido cruise** (see page 8), **8-day Circle Hokkaido cruise** (see page 8) or **11-day Circle Japan with Nebuta & Summer Festivals cruise** (see page 6)

Interior fares from*	Balcony fares from*	Mini-Suite fares from*	Club Class fares from*	Suite fares from*
\$8,504	\$9,651	\$10,259	\$10,934	\$13,431

2019 DEPARTURES

Diamond Princess®
 Jul 4 TOUR 4A
 Jul 28 TOUR 4B

Aug 25 TOUR 4A
 Sep 30 TOUR 4A

Tour 4A includes 8-day Fall Foliage Circle Hokkaido cruise shown on page 8 or 8-day Circle Hokkaido cruise shown on page 8. Tour 4B includes 11-day Circle Japan with Nebuta & Summer Festivals cruise shown on page 6.

*Fares based on 7/4/19 sailing. Taxes, Fees and Port Expenses of up to \$175 are additional and subject to change. See below for more details.

*Lead-in fares are based on the lowest category stateroom for each category type. Launch Fares represent the lead-in introductory fares and are subject to change. Rates shown are per person, cruise or cruisetour only, based on double occupancy and do not apply to singles or third- and fourth-berth guests; contact Princess Cruises for third- and fourth-berth guest fares. Refer to princess.com for information and fares for oceanview cabins. This offer is based on space availability, is capacity controlled and applies to the sailing dates and stateroom categories shown on each itinerary. Fares may remain at a discounted level after this promotion. See princess.com for terms, conditions and definitions that apply to all bookings.

port spotlights

During your voyage with Princess®, you'll be immersed in the sweeping beauty of Japan as you discover unforgettable sites in our amazing ports of call. From timeless traditions to sensational celebrations, find perfect harmony while experiencing Japanese culture on exciting shore excursions throughout your journey.



osaka

For centuries, Osaka was Japan's cultural and commercial gateway to Asia — the point of entry for trade goods. In the late 16th century, the nation's seat of power shifted from Osaka to a sleepy little fishing village called Edo — modern Tokyo.



Osaka Excursion

ENRYAKUJI & ISHIYAMA-DERA TEMPLES

Travel to Lake Biwa and discover two historic temples. Explore the temple complex of Enryakuji and the serene, mountainside Ishiyama-dera Temple, both UNESCO World Heritage Sites.



okinawa

Okinawa has been a center of trade and a source for conflict throughout its history. These islands used to be an independent kingdom and became the feudal possession of a Japanese daimyo following the Meiji Restoration of 1868. Okinawa is also the birthplace of karate, a fusion of Chinese kung fu and other martial arts.



Okinawa Excursion

SHURIJO CASTLE & KOKUSAI STREET

Explore exceptional Shuri Castle, restored to its 1300s grandeur as the palace of the Ryukyu king, and then stroll Kokusai Street, a cosmopolitan marketplace.

To learn more about ports and excursions, go to princess.com/excursions



sakaiminato

Wedged between sea, sky and mountains, this small fishing port has been esteemed for centuries for its superb seafood. Here, the Sea of Japan yields both crab and hon-maguro, the prized bluefin tuna sought by gourmets around the world.



Sakaiminato Excursion

TOTTORI FLOWER PARK

Experience the lovely blooms and fountains at Tottori Hanakairo Flower Park; then sample your way through the candy factory.



hiroshima

On August 6, 1945, human history was irrevocably altered when the American bomber Enola Gay dropped an atomic bomb on Hiroshima. Today, Hiroshima is a monument not only to the destructive forces but also to the indomitable will of the human spirit to overcome tragedy.



Hiroshima Excursion

PEACE MEMORIAL PARK, ATOMIC BOMB DOME & GARDENS

View the Atomic Bomb Dome, a UNESCO World Heritage Site, and Children's Peace Monument before exploring the Shukkeien Gardens.



taipei

Taipei is Taiwan's capital city and one of the world's most important commercial centers. A world leader in the production of bicycles, computer chips, plastics, and chemicals, Taipei is a sophisticated modern metropolis that is built upon a rich historical past.



Taipei Excursion

CITY DRIVE, LUNGSHAN TEMPLE & HANDICRAFT CENTER

Marvel at Lungshan Temple, an ornate temple built during the Ching Dynasty, and the awe-inspiring Chiang Kai-shek Memorial. Enjoy shopping for souvenirs at Taipei Handicraft Centre.

port spotlights



ishigaki

Ishigaki is the cultural, political and economic center of the Yaeyama Islands, originally founded in 1908 as Yaeyama Village before becoming Ishigaki Town in 1926. Noted for its white-sand beaches, turquoise waters and as an ideal snorkeling site to catch glimpses of famed manta rays, Ishigaki Island offers many opportunities to commune with nature.



Ishigaki Excursion

IRIOMOTE ISLAND & JUNGLE CRUISE

Step off the beaten track and venture to Iriomote Island, an unspoiled paradise of verdant forests, tranquil rivers, sandy beaches and lush gardens.



kobe

Sitting on a hillside sloping down to the sea, Kobe is located in between mountains and the coast. A thriving cosmopolitan city, Kobe is a great destination to experience high-quality restaurants, lively nightlife and scenic sightseeing. In 1995, the city was hit by the Great Hanshin-Awaji Earthquake, which left thousands of buildings destroyed. The city has since rebuilt itself and continues to attract global visitors.



Kobe Excursion

TEMPLES OF NARA

Discover this ancient UNESCO World Heritage Site featuring five Buddhist temples, a Shinto shrine, a palace and a primeval forest.



otaru

In 1880, the first railroad line on the island of Hokkaido connected Sapporo, the prefectural capital, with the important port city of Otaru. Today, international travelers have flocked to experience Otaru's charms — including the scenic beauty of Hokkaido's rugged west coast and its nearby national parks.



Otaru Excursion

JYOZANKEI ONSEN

Experience the time-honored custom of a traditional Japanese hot-spring bath, or *onsen*, on this tour designed to refresh and rejuvenate.

your time at sea



Throughout your peaceful voyage through Japan on Diamond Princess®, you'll find that every moment feels a bit different. On most days, you will encounter a plethora of exciting new discoveries, like when you're treated to local Japanese flavors on board. Later, within the soothing embrace of our Izumi Japanese Bath, every minute becomes its own blissful memory. With Princess, you'll have plenty of time on board to spend however you please. We only ask that you cherish every moment — from your first bite of our authentic Japanese sushi to the final number closing out a Broadway-style show.

timeless indulgences

While encountering the wonders of Japan, our specialty restaurants and cafés will introduce you to invigorating new tastes. Sample delicately crafted sushi. Indulge in delicious pastas bathed in savory sauces. Sink your teeth into flavorful steaks cooked precisely to your liking. No matter where you dine, each of our restaurants offers a unique menu of delicious dishes.

Expand your palette with specialty dining

After immersing yourself in the history of Japan, enhance your experience with sumptuous dishes created by our prestigious chefs. Embrace the European charm of Sabatini'sSM Italian Trattoria, offering handmade pastas inspired by Chef Angelo Auriana. Or embark on a culinary journey at Sterling Steakhouse,SM where you'll enjoy the highest quality cuts of premium, grain-fed beef, including New York strip steak, porterhouse and filet mignon.



kai sushi

Get an up-close view of sushi and sashimi preparation by an expert *Itamae* (sushi chef). Then sit at the sushi bar or dine at a table for a more elegant experience. An afternoon or evening at Kai Sushi dining on regional cuisine is a true culinary delight.

A CASUAL AFFAIR

A variety of casual dining favorites await you on every deck. Enjoy complimentary, familiar favorites like Neopolitan-style pizza, deemed the "Best Pizza at Sea" by *USA TODAY*. Check out the Horizon Court to create your own specialty salad or sandwich, or venture to the International Café and select something new from a menu that changes throughout the day — from grilled paninis to freshly baked cookies.

Venues and features vary by ship. Charges may apply.

DINE LIKE A LOCAL

Dig into the local flavors of Japan prepared by some of the most passionate chefs in the world. Delicious noodle dishes await at Horizon Court, while expertly prepared sashimi can be found at Kai Sushi. As you dine, sip on spirited drinks popular in the region such as fine Japanese whiskies, sake and shochu.

engaging entertainment

As you travel to Japan's distant realms and otherworldly destinations, you'll find the activities on board are just as exciting. From rousing live production shows and star performances to Japanese-inspired films screened under a starry night's sky, every day is filled with a new form of entertainment.



CURTAIN UP!

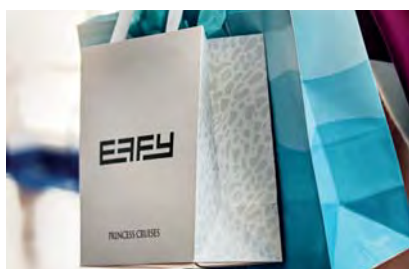
Voted Best Entertainment by USA Today for two consecutive years, Princess Cruises offers exciting Broadway caliber shows, featuring our talented cast of singers and dancers. New onboard is **Bravo** which delights our guests with a

beautiful evening of classical music featuring our singers, dancers and full orchestra. Also, delight in the 400-year-old tradition of comic storytelling known as “rakugo” and enjoy performances of traditional Japanese dance and music.



ENCOUNTERS WITH DISCOVERY AT SEA™

Find yourself inspired by enrichment speakers as they walk you through the culture and history of Japan's amazing destinations. Refine your perspective of the far-eastern world with key insights from years past.



BRING HOME SOMETHING NEW

Do a bit of shopping in The Shops of Princess — you'll find top-name brands, like Coach, Swarovski, Lancôme and Chanel, plus fine jewelry from Effy and luxury watch brands, including OMEGA and TAG Heuer. Also purchase fine spirits and Princess logo merchandise — all available at tax- and duty-free savings.



YOUTH & TEEN CENTERS

Young explorers (ages 3-12) are in for an adventure all their own at Camp Discovery™! While the littler seafarers (ages 3-7) can hang out with their favorite animals in The Treehouse, our forest-themed fun center, their older siblings (ages 8-12) can enjoy another version of the great outdoors at The Lodge. Teens (ages 13-17) can kick back and connect in The Beach House — their very own separate contemporary lounge.



feeling lucky?

Try your hand at all your favorite Vegas games in our onboard casino — from blackjack, roulette and craps to video poker and slots. Will you be the lucky one to hit the jackpot?

joyful rejuvenation

As you encounter serene and captivating destinations, let Princess® guide you on a journey of rejuvenation on board. Attain complete peace of mind, body and soul by indulging in relaxing amenities at the Izumi Japanese Bath, Lotus Spa® and The Sanctuary — all staffed by professional massage therapists and wellness experts. Just sit back and allow yourself to be pampered.



IZUMI JAPANESE BATH

Unwind like never before in the largest Japanese bath of its kind at sea, offered exclusively on Diamond Princess®. Modeled after a traditional Japanese bath, or *onsen*, Izumi offers a combination of indoor and outdoor services for complete relaxation, including steam rooms, saunas and hot tubs with spectacular ocean views.

THE SANCTUARY

Slip away from the soaring views of Japan to this peaceful on-deck oasis reserved just for adults. Settle into a plush lounge chair while Serenity Stewards put you in a state of ease — with chilled face towels, light snacks and beverages. Then visit a private cabana for a rejuvenating alfresco massage. The Sanctuary offers all the essentials for optimum relaxation.



YOUR BEST NIGHT'S SLEEP

After a long day strolling along ancient shorelines, sink into the Jacquard-woven cotton linens of the Princess Luxury Bed. Developed by board certified sleep expert Dr. Michael Breus and HGTV design star Candice Olson, this blissful bed was scientifically designed to capture the pure essence of a good night's sleep.

Venues vary by ship. Nominal Charges may apply.

your home, away from home

After immersing yourself in the timeless traditions of Japan, it's comforting to be welcomed back on board with a friendly greeting and a warm smile. At Princess, we make sure you feel at home. It's true hospitality for a truly memorable experience.



all staterooms feature:

- The Princess Luxury Bed
- Refrigerator
- Flat-panel television
- Private bathroom with shower
- Complimentary 24-hour room service^^
- Hair dryer
- Digital security safe

OUR MOST LUXURIOUS OPTIONS

For those seeking more space and added amenities, Princess has options including our spacious mini-suites and expansive full suites. Enjoy more living space, sofa beds, and separate seating areas, and wonderful enhanced amenities.



AMENITIES	SUITE	CLUB CLASS	MINI-SUITE
Balcony with luxury furniture including 2 loungers, 4 chairs, table and ottoman	✓		
Balcony with standard furniture including 2-4 chairs, table and ottoman		✓	✓
2 floor-to-ceiling sliding glass doors	✓		
1 floor-to-ceiling sliding glass door		✓	✓
Two flat-panel televisions	✓	✓	✓
Our very best Mini-Suites		✓	
Club Class Dining*	✓	✓	
One-time complimentary wine setup^	✓	✓	
Evening canapés, upon request	✓	✓	
Welcome glass of Champagne‡	✓	✓	✓
One complimentary mini-bar setup‡	✓	✓	
Separate sitting area with sofa bed, chair and table	✓	✓	✓
Upgraded bathroom amenities	✓	✓	✓
Bathroom tub and massage shower head	✓	✓	✓
Separate Shower	✓		
Upgraded terry shawl bathrobes	✓	✓	
Spacious walk-in closet	✓		
Complimentary use of the Lotus Spa® Thermal Suite†	✓		
Complimentary dinner in a specialty restaurant on embarkation day**	✓		
Priority specialty dining and shore excursion reservations	✓		
Complimentary Laundry and professional cleaning services	✓		
Priority embarkation and disembarkation at the beginning and end of your cruise	✓	✓	
Priority disembarkation at tender port	✓		

MORE OPTIONS



BALCONY

A front-row seat for spectacular scenery on your cruise with a floor-to-ceiling sliding glass door.



OCEANVIEW

Includes all our standard Princess amenities, with a broad picture window to bring in light and views.



INTERIOR

Our most affordable option, the interior stateroom features two twin beds or a queen-size bed.



WHEELCHAIR-ACCESSIBLE

Full wheelchair-turning space, roll-in shower with grab bars and fold-down seat, easy-access closet, and accessible writing desk. Details at princess.com.





PRINCESS CRUISES
come back new®



RECOMMEND MAGAZINE
13-TIME WINNER



CRUISE CRITIC



TRAVELAGE WEST



TRAVEL + LEISURE



FOOD & WINE
MAGAZINE



CRUISE INTERNATIONAL (UK)



discover the world
with Princess®

ALASKA • ASIA • AUSTRALIA & NEW ZEALAND • CALIFORNIA & PACIFIC COAST • CANADA & NEW ENGLAND • CARIBBEAN
EUROPE • HAWAII • JAPAN • MEXICO • PANAMA CANAL • SOUTH AMERICA • SOUTH PACIFIC • WORLD CRUISE

BOOK NOW

 **CONTACT YOUR TRAVEL AGENT**
 **PRINCESS.COM**

 **CALL (65) 6922 6788**

YOUR PROFESSIONAL TRAVEL AGENT



PRINCESS CRUISES
come back new®

Carnival Plc (Singapore Branch)
Marina Bay Financial Centre
10 Marina Boulevard Tower 2 #14-02
Singapore 018983
Fax: (65) 6922 6789

Telephone
Singapore: (65) 6922 6788 / (65) 6922 6787
Malaysia: 1 (800) 806656 / 1 (800) 806657 (Toll Free)
Indonesia: (007) 803-651-0004 (Toll Free)