



PRINCESS CRUISES  
*escape completely®*

# 2012 Alaska

May to September 2012 Cruises and Land & Sea Vacations



**Captain's Circle  
Launch Savings**

For a limited time, past passengers can **save up to \$100 per person** and enjoy a **2-for-1 deposit** on any cruise\*

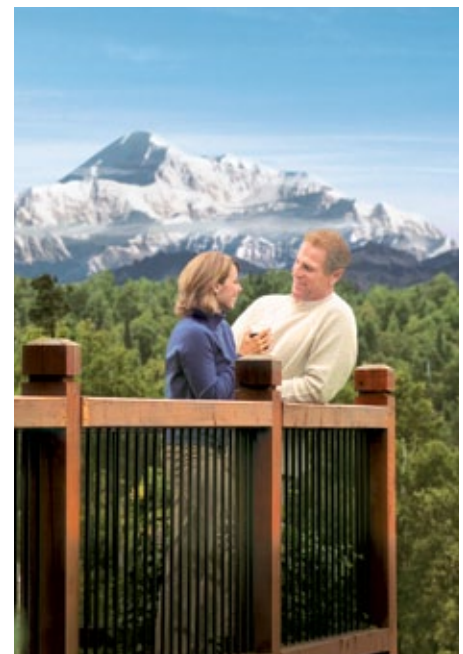
**Details on  
inside cover**

# The best of Alaska

Few places are as spectacular as Alaska, with soaring mountains, mighty glaciers and abundant wildlife. And Princess® is the best way to see the Great Land, with seven ships sailing seven itineraries and a variety of land & sea vacations featuring Princess Rail, Princess-owned wilderness lodges and Alaska's two undisputed highlights, **Glacier Bay** and **Denali National Parks**.

Our popular Voyage of the Glaciers cruise is featured on every land & sea vacation. Princess exclusive **Direct-to-the-Wilderness®** rail service, offered on most itineraries, gets you from ship to one of our Denali area lodges the same day for more time in Alaska's heart. Additional options visit our lodges at Copper River and the Kenai Peninsula and other destinations beyond.

Voted  
**"Best Cruise Line in Alaska"**  
seven out of the past eight years  
by readers of *Travel Weekly*



**Extra  
Savings  
for Past  
Passengers!\***

**Limited-time offer – If you've sailed with us before, just book any of these vacations to enjoy Captain's Circle Launch Savings:**

- An **extra savings** of up to \$100 per person
- Enjoy a **2-for-1 deposit** (just 10% of cruise fare)
- **Save even more** when you apply this offer to any lower fare for which you qualify

\* Princess Cruises Captain's Circle Launch Savings of up to \$100 per person discount is applicable in all categories and combinable only with Launch Fares, Group Fares, Regional and other past-passenger promotions. Once booked, if a lower fare for which the past passenger qualifies for and requests becomes available, the discount will automatically combine with the lower fare. Specific discount amounts vary by itinerary and cruise length. New-booking-only promotions are not combinable with the discount. The Princess Cruises Captain's Circle Launch Savings is not applicable to third and fourth berth passengers. Call 1-800-PRINCESS for details. Offer expires 9/30/11. Promotion code is PA1.



# Exciting options to see the Great Land

Land & sea vacations, pages 2-5. Cruises, pages 6-7.



Note: Motorcoach may be substituted for rail on some departures.



Denali Princess Wilderness Lodge®



Mt. McKinley Princess Wilderness Lodge®



Copper River Princess Wilderness Lodge®



Kenai Princess Wilderness Lodge®

# Denali Explorer & On Your Own

Our most popular Alaska land & sea vacations

Our **Denali Explorer** land and sea vacations combine a 7-day Voyage of the Glaciers cruise with 3 to 6 nights on land, and up to four nights at our Denali-area lodges. Most include our exclusive Direct-to-the-Wilderness® rail service between ship and lodge. All include the National History Tour into Denali National Park.

- 7-day Voyage of the Glaciers cruise
- Stays at Princess wilderness lodges in the Denali area
- Most itineraries include exclusive Direct-to-the-Wilderness rail service
- Options to Fairbanks and/or Anchorage
- Natural History Tour into Denali National Park (option to upgrade to Tundra Wilderness Tour at additional cost)
- Sternwheeler Riverboat Cruise and Gold Mine Tour in Fairbanks (if applicable)

**On Your Own** cruisetours include 3 to 4 nights on land without prescheduled sightseeing activities, so you can customize how you want to spend your free time. This is the perfect option for the independent-minded traveler.

**Add 3 days on land to a 7-day cruise from just \$299 more\***

<b>A</b> 10 Nights	7 day Voyage of the Glaciers cruise	1 night Denali Princess Wilderness Lodge Natural History Tour	1 night Mt. McKinley Princess Wilderness Lodge	1 night Anchorage		Interior fares from <sup>^</sup> <b>1,223</b> Balcony fares from <sup>^</sup> <b>1,823</b>
	<b>AA3</b> After Cruise	<b>Island Princess:</b> May 23; Jun 6, 20; Jul 4, 18; Aug 1, 15, 29; Sep 12 <b>Coral Princess:</b> May 14, 28; Jun 11, 25; Jul 9, 23; Aug 6, 20; Sep 3 <b>Sapphire Princess:</b> May 19; Jun 2, 16, 30; Jul 14, 28; Aug 11, 25; Sep 8				
	<b>AB3</b> Before Cruise	<b>Coral Princess:</b> May 18; Jun 1, 15, 29; Jul 13, 27; Aug 10, 24; Sep 7 <b>Sapphire Princess:</b> May 23; Jun 6, 20; Jul 4, 18; Aug 1, 15, 29; Sep 12				
<b>B</b> 10 Nights	7-day Voyage of the Glaciers cruise	1 night Mt. McKinley Princess Wilderness Lodge	1 night Denali Princess Wilderness Lodge Natural History Tour	1 night Fairbanks Sternwheeler Riverboat Cruise		Interior fares from <sup>^</sup> <b>1,173</b> Balcony fares from <sup>^</sup> <b>1,773</b>
	<b>BA3</b> After Cruise	<b>Island Princess:</b> May 23; Jun 6, 20; Jul 4, 18; Aug 1, 15, 29; Sep 12 <b>Coral Princess:</b> May 14, 28; Jun 11, 25; Jul 9, 23; Aug 6, 20; Sep 3 <b>Diamond Princess:</b> May 26; Jun 9, 23; Jul 7, 21; Aug 4, 18; Sep 1, 15 <b>Sapphire Princess:</b> May 19; Jun 2, 16, 30; Jul 14, 28; Aug 11, 25; Sep 8				
	<b>BB3</b> Before Cruise	<b>Island Princess:</b> May 27; Jun 10, 24; Jul 8, 22; Aug 5, 19; Sep 2, 16 <b>Coral Princess:</b> May 18; Jun 1, 15, 29; Jul 13, 27; Aug 10, 24; Sep 7 <b>Diamond Princess:</b> May 30; Jun 13, 27; Jul 11, 25; Aug 8, 22; Sep 5 <b>Sapphire Princess:</b> May 23; Jun 6, 20; Jul 4, 18; Aug 1, 15, 29; Sep 12				
<b>NEW</b> <b>C</b> 10 Nights	7-day Voyage of the Glaciers cruise	1 night Denali Princess Wilderness Lodge Natural History Tour	2 nights Fairbanks Sternwheeler Riverboat Cruise & Gold Mine Tour	<b>On Your Own CAX and CBX also available<sup>o</sup></b> <b>Fares from \$948<sup>^</sup></b>		Interior fares from <sup>^</sup> <b>1,098</b> Balcony fares from <sup>^</sup> <b>1,698</b>
	<b>CA3</b> After Cruise	<b>Island Princess:</b> May 23; Jun 6, 20; Jul 4, 18; Aug 1, 15, 29; Sep 12 <b>Diamond Princess:</b> May 26; Jun 9, 23; Jul 7, 21; Aug 4, 18; Sep 1, 15 <b>Sapphire Princess:</b> May 19; Jun 2, 16, 30; Jul 14, 28; Aug 11, 25; Sep 8				
	<b>CB3</b> Before Cruise	<b>Island Princess:</b> May 27; Jun 10, 24; Jul 8, 22; Aug 5, 19; Sep 2, 16 <b>Diamond Princess:</b> May 30; June 13, 27; July 11, 25; Aug 8, 22; Sept 5				
<b>NEW</b> <b>D</b> 11 Nights	7-day Voyage of the Glaciers cruise	2 nights Denali Princess Wilderness Lodge Natural History Tour	1 night Mt. McKinley Princess Wilderness Lodge	1 night Anchorage	<b>On Your Own DBX also available<sup>o</sup></b> <b>Fares from \$1,523<sup>^</sup></b>	Interior fares from <sup>^</sup> <b>1,348</b> Balcony fares from <sup>^</sup> <b>1,948</b>
	<b>DA4</b> After Cruise	<b>Island Princess:</b> May 23; Jun 6, 20; Jul 4, 18; Aug 1, 15, 29; Sep 12 <b>Diamond Princess:</b> May 26; Jun 9, 23; Jul 7, 21; Aug 4, 18; Sep 1, 15				
	<b>DB4</b> Before Cruise	<b>Coral Princess:</b> May 17, 31; Jun 14, 28; Jul 12, 26; Aug 9, 23; Sep 6 <b>Diamond Princess:</b> May 29; Jun 12, 26; Jul 10, 24; Aug 7, 21; Sep 4 <b>Sapphire Princess:</b> May 22; Jun 5, 19; Jul 3, 17, 31; Aug 14, 28; Sep 11				
<b>E</b> 11 Nights	7-day Voyage of the Glaciers cruise	1 night Mt. McKinley Princess Wilderness Lodge	2 nights Denali Princess Wilderness Lodge Natural History Tour	1 night Fairbanks Sternwheeler Riverboat Cruise	<b>On Your Own EBX also available<sup>o</sup></b> <b>Fares from \$1,473<sup>^</sup></b>	Interior fares from <sup>^</sup> <b>1,248</b> Balcony fares from <sup>^</sup> <b>1,848</b>
	<b>EA4</b> After Cruise	<b>Coral Princess:</b> May 14, 28; Jun 11, 25; Jul 9, 23; Aug 6, 20; Sep 3 <b>Diamond Princess:</b> May 26; Jun 9, 23; Jul 7, 21; Aug 4, 18; Sep 1, 15 <b>Sapphire Princess:</b> May 19; Jun 2, 16, 30; Jul 14, 28; Aug 11, 25; Sep 8				
	<b>EB4</b> Before Cruise	<b>Coral Princess:</b> May 17, 31; Jun 14, 28; Jul 12, 26; Aug 9, 23; Sep 6 <b>Diamond Princess:</b> May 29; Jun 12, 26; Jul 10, 24; Aug 7, 21; Sep 4				

<sup>o</sup>On Your Own cruisetour options do not include Direct-to-the-Wilderness rail service, Natural History Tour into Denali National Park, Sternwheeler Riverboat Cruise or Gold Mine Tour in Fairbanks.

Learn more about Princess Alaska cruisetours at: [princess.com/alaskacruisetours](http://princess.com/alaskacruisetours)



**Captain's Circle  
Launch Savings**

For a limited time, past passengers can **save up to \$100 per person** and enjoy a **2-for-1 deposit** on any cruise\*

**Details on  
inside cover**

NEW <b>F</b> 11 Nights	7-day Voyage of the Glaciers cruise	1 night Fairbanks Sternwheeler Riverboat Cruise	1 night Denali Princess Wilderness Lodge Natural History Tour	2 nights Mt. McKinley Princess Wilderness Lodge		Interior fares from <sup>^</sup> <b>\$1,398</b> Balcony fares from <sup>^</sup> <b>\$1,998</b>
	<b>FA4</b> After Cruise	<b>Coral Princess: May 14, 28; Jun 11, 25; Jul 9, 23; Aug 6, 20; Sep 3</b> <b>Diamond Princess: May 26; Jun 9, 23; Jul 7, 21; Aug 4, 18; Sep 1</b> <b>Sapphire Princess: May 19; Jun 2, 16, 30; Jul 14, 28; Aug 11, 25; Sep 8</b>				
	<b>FB4</b> Before Cruise	<b>Island Princess: May 26; Jun 9, 23; Jul 7, 21; Aug 4, 18; Sep 1, 15</b> <b>Diamond Princess: May 29; Jun 12, 26; Jul 10, 24; Aug 7, 21; Sep 4</b> <b>Sapphire Princess: May 22; Jun 5, 19; Jul 3, 17, 31; Aug 14, 28; Sep 11</b>				
NEW <b>G</b> 11 Nights	7-day Voyage of the Glaciers cruise	2 nights Mt. McKinley Princess Wilderness Lodge	2 nights Denali Princess Wilderness Lodge Natural History Tour			Interior fares from <sup>^</sup> <b>\$1,398</b> Balcony fares from <sup>^</sup> <b>\$1,998</b>
	<b>GA4</b> After Cruise	<b>Island Princess: May 23; Jun 6, 20; Jul 4, 18; Aug 1, 15, 29; Sep 12</b> <b>Coral Princess: May 14, 28; Jun 11, 25; Jul 9, 23; Aug 6, 20; Sep 3</b> <b>Diamond Princess: May 26; Jun 9, 23; Jul 7, 21; Aug 4, 18; Sep 1</b> <b>Sapphire Princess: May 19; Jun 2, 16, 30; Jul 14, 28; Aug 11, 25; Sep 8</b>				
	<b>GB4</b> Before Cruise	<b>Island Princess: May 26; Jun 9, 23; Jul 7, 21; Aug 4, 18; Sep 1, 15</b> <b>Diamond Princess: May 29; Jun 12, 26; Jul 10, 24; Aug 7, 21; Sep 4</b> <b>Sapphire Princess: May 22; Jun 5, 19; Jul 3, 17, 31; Aug 14, 28; Sep 11</b>				
<b>H</b> 11 Nights	7-day Voyage of the Glaciers cruise	2 nights Denali Princess Wilderness Lodge Natural History Tour	2 nights Fairbanks Sternwheeler Riverboat Cruise & Gold Mine Tour			Interior fares from <sup>^</sup> <b>\$1,323</b> Balcony fares from <sup>^</sup> <b>\$1,923</b>
	<b>HA4</b> After Cruise	<b>Island Princess: May 23; Jun 6, 20; Jul 4, 18; Aug 1, 15, 29; Sep 12</b> <b>Coral Princess: May 14, 28; Jun 11, 25; Jul 9, 23; Aug 6, 20; Sep 3</b> <b>Sapphire Princess: May 19; Jun 2, 16, 30; Jul 14, 28; Aug 11, 25; Sep 8</b>				
	<b>HB4</b> Before Cruise	<b>Island Princess: May 26; Jun 9, 23; Jul 7, 21; Aug 4, 18; Sep 1, 15</b>				
<b>I</b> 12 Nights	7-day Voyage of the Glaciers cruise	1 night Anchorage	1 night Mt. McKinley Princess Wilderness Lodge	1 night Denali Princess Wilderness Lodge Natural History Tour	2 nights Fairbanks Sternwheeler Riverboat Cruise & Gold Mine Tour	Interior fares from <sup>^</sup> <b>\$1,348</b> Balcony fares from <sup>^</sup> <b>\$1,948</b>
	<b>IA5</b> After Cruise	<b>Island Princess: May 23; Jun 6, 20; Jul 4, 18; Aug 1, 15, 29; Sep 12</b> <b>Diamond Princess: May 26; Jun 9, 23; Jul 7, 21; Aug 4, 18; Sep 1, 15</b> <b>Sapphire Princess: May 19; Jun 2, 16, 30; Jul 14, 28; Aug 11, 25; Sep 8</b>				
	<b>IB5</b> Before Cruise	<b>Island Princess: May 25; Jun 8, 22; Jul 6, 20; Aug 3, 17, 31; Sep 14</b> <b>Coral Princess: May 16, 30; Jun 13, 27; Jul 11, 25; Aug 8, 22; Sep 5</b> <b>Diamond Princess: May 28; Jun 11, 25; Jul 9, 23; Aug 6, 20; Sep 3</b> <b>Sapphire Princess: May 21; Jun 4, 18; Jul 2, 16, 30; Aug 13, 27; Sep 10</b>				
<b>J</b> 12 Nights	1 night Anchorage	2 nights Mt. McKinley Princess Wilderness Lodge	2 nights Denali Princess Wilderness Lodge Natural History Tour	7-day Voyage of the Glaciers cruise		Interior fares from <sup>^</sup> <b>\$1,573</b> Balcony fares from <sup>^</sup> <b>\$2,173</b>
	<b>JB5</b> Before Cruise	<b>Island Princess: May 25; Jun 8, 22; Jul 6, 20; Aug 3, 17, 31; Sep 14</b> <b>Diamond Princess: May 28; Jun 11, 25; Jul 9, 23; Aug 6, 20; Sep 3</b>				
<b>K</b> 12 Nights	7-day Voyage of the Glaciers cruise	2 nights Mt. McKinley Princess Wilderness Lodge	2 nights Denali Princess Wilderness Lodge Natural History Tour	1 night Fairbanks Sternwheeler Riverboat Cruise		Interior fares from <sup>^</sup> <b>\$1,498</b> Balcony fares from <sup>^</sup> <b>\$2,098</b>
	<b>KA5</b> After Cruise	<b>Island Princess: May 23; Jun 6, 20; Jul 4, 18; Aug 1, 15, 29; Sep 12</b> <b>Coral Princess: May 14, 28; Jun 11, 25; Jul 9, 23; Aug 6, 20; Sep 3</b> <b>Diamond Princess: May 26; Jun 9, 23; Jul 7, 21; Aug 4, 18; Sep 1</b> <b>Sapphire Princess: May 19; Jun 2, 16, 30; Jul 14, 28; Aug 11, 25; Sep 8</b>				
	<b>KB5</b> Before Cruise	<b>Island Princess: May 25; Jun 8, 22; Jul 6, 20; Aug 3, 17, 31; Sep 14</b> <b>Coral Princess: May 30; Jun 13, 27; Jul 11, 25; Aug 8, 22; Sep 5</b> <b>Diamond Princess: May 28; Jun 11, 25; Jul 9, 23; Aug 6, 20; Sep 3</b> <b>Sapphire Princess: May 21; Jun 4, 18; Jul 2, 16, 30; Aug 13, 27; Sep 10</b>				
<b>L</b> 13 Nights	7-day Voyage of the Glaciers cruise	2 nights Mt. McKinley Princess Wilderness Lodge	2 nights Denali Princess Wilderness Lodge Natural History Tour	2 nights Fairbanks Sternwheeler Riverboat Cruise & Gold Mine Tour		Interior fares from <sup>^</sup> <b>\$1,598</b> Balcony fares from <sup>^</sup> <b>\$2,198</b>
	<b>LA6</b> After Cruise	<b>Coral Princess: May 14, 28; Jun 11, 25; Jul 9, 23; Aug 6, 20; Sep 3</b>				
	<b>LB6</b> Before Cruise	<b>Island Princess: May 24; Jun 7, 21; Jul 5, 19; Aug 2, 16, 30; Sep 13</b> <b>Sapphire Princess: May 20; June 3, 17; July 1, 15, 29; Aug 12, 26; Sept 9</b>				

\*\$299 is the incremental per person fare to add 3 days on land to a 7-day cruise to create a 10-day cruisetour. Purchase of entire cruisetour is required. Based on cruisetour CAX, Island Princess 5/23/12 departure only.

<sup>^</sup>Princess reserves the right to impose a fuel supplement of up to \$9 per person per day on all passengers if the NYMEX oil price exceeds \$70 per barrel, even if the fare has already been paid in full. Government fees and taxes of up to \$145 per person are additional and subject to change. Fares based on bolded departure dates. On Your Own cruisetour CAX is based on 5/23/12 departure and DBX/EBX are based on 5/22/12 departure. Certain restrictions apply. See page 7 for details.

**After Cruise = land tour after cruise; Before Cruise = land tour before cruise.**

# Off the Beaten Path

Denali National Park, plus the Kenai Peninsula, Wrangell–St. Elias National Park or the remote Arctic

Enjoy the best features of our Denali Explorer cruisetours — including time at our Denali area lodges — with adventures to breathtaking Alaska attractions beyond. Stay at Princess lodges on the gorgeous Kenai Peninsula and idyllic Copper River, or venture on to remote Prudhoe Bay in the Arctic, for 6 to 8 nights of Alaska's greatest destinations.

- 7-day Voyage of the Glaciers cruise
- At least two nights in the Denali area, plus Kenai, Wrangell–St. Elias National Park or Prudhoe Bay
- Princess rail service
- Stays at Princess wilderness lodges
- Natural History Tour into Denali National Park (option to upgrade to the Tundra Wilderness Tour at additional cost)
- Sternwheeler Riverboat Cruise and Gold Mine Tour in Fairbanks (if applicable)



<b>M</b> 13 Nights	7 day Voyage of the Glaciers cruise	2 nights Copper River Princess Wilderness Lodge	2 nights Denali Princess Wilderness Lodge Natural History Tour	1 night Mt. McKinley Princess Wilderness Lodge	1 night Anchorage	Interior fares from <sup>^</sup> <b>\$1,548</b> Balcony fares from <sup>^</sup> <b>\$2,148</b>	
	<b>MA6</b> After Cruise	<b>Island Princess:</b> May 23; Jun 6, 20; Jul 4, 18; Aug 1, 15, 29 <b>Coral Princess:</b> May 28; Jun 11, 25; Jul 9, 23; Aug 6, 20; Sep 3 <b>Diamond Princess:</b> May 26; Jun 9, 23; Jul 7, 21; Aug 4, 18; Sep 1 <b>Sapphire Princess:</b> May 19; Jun 2, 16, 30; Jul 14, 28; Aug 11, 25; Sep 8					
	<b>MB6</b> Before Cruise	<b>Island Princess:</b> May 24; Jun 7, 21; Jul 5, 19; Aug 2, 16, 30 <b>Coral Princess:</b> May 29; Jun 12, 26; Jul 10, 24; Aug 7, 21; Sep 4 <b>Diamond Princess:</b> May 27; Jun 10, 24; Jul 8, 22; Aug 5, 19; Sep 2 <b>Sapphire Princess:</b> May 20; Jun 3, 17; Jul 1, 15, 29; Aug 12, 26; Sep 9					
<b>N</b> 14 Nights	7-day Voyage of the Glaciers cruise	1 night Mt. McKinley Princess Wilderness Lodge	1 night Denali Princess Wilderness Lodge Natural History Tour	2 nights Fairbanks Sternwheeler Riverboat Cruise & Gold Mine Tour	2 nights Copper River Princess Wilderness Lodge	1 night Anchorage	Interior fares from <sup>^</sup> <b>\$1,648</b> Balcony fares from <sup>^</sup> <b>\$2,248</b>
	<b>NA7</b> After Cruise	<b>Island Princess:</b> May 23; Jun 6, 20; Jul 4, 18; Aug 1, 15, 29 <b>Coral Princess:</b> <b>May 14</b> , 28; Jun 11, 25; Jul 9, 23; Aug 6, 20; Sep 3 <b>Diamond Princess:</b> May 26; Jun 9, 23; Jul 7, 21; Aug 4, 18; Sep 1					
	<b>NB7</b> Before Cruise	<b>Coral Princess:</b> May 28; Jun 11, 25; Jul 9, 23; Aug 6, 20; Sep 3 <b>Diamond Princess:</b> May 26; Jun 9, 23; Jul 7, 21; Aug 4, 18; Sep 1					
<b>O</b> 14 Nights	7-day Voyage of the Glaciers cruise	2 nights Kenai Princess Wilderness Lodge	1 night Mt. McKinley Princess Wilderness Lodge	2 nights Denali Princess Wilderness Lodge Natural History Tour	2 nights Fairbanks Sternwheeler Riverboat Cruise & Gold Mine Tour	Interior fares from <sup>^</sup> <b>\$1,698</b> Balcony fares from <sup>^</sup> <b>\$2,298</b>	
	<b>OA7</b> After Cruise	<b>Diamond Princess:</b> May 26; Jun 9, 23; Jul 7, 21; Aug 4, 18; Sep 1 <b>Sapphire Princess:</b> <b>May 19</b> ; Jun 2, 16, 30; Jul 14, 28; Aug 11, 25; Sep 8					
	<b>OB7</b> Before Cruise	<b>Island Princess:</b> May 23; Jun 6, 20; Jul 4, 18; Aug 1, 15, 29 <b>Diamond Princess:</b> May 26; Jun 9, 23; Jul 7, 21; Aug 4, 18; Sep 1 <b>Sapphire Princess:</b> May 19; Jun 2, 16, 30; Jul 14, 28; Aug 11, 25; Sep 8					
<b>P</b> 15 Nights	7-day Voyage of the Glaciers cruise	3 nights Kenai Princess Wilderness Lodge	1 night Mt. McKinley Princess Wilderness Lodge	2 nights Denali Princess Wilderness Lodge Natural History Tour	2 nights Fairbanks Sternwheeler Riverboat Cruise & Gold Mine Tour	Interior fares from <sup>^</sup> <b>\$1,973</b> Balcony fares from <sup>^</sup> <b>\$2,698</b>	
	<b>PA8</b> After Cruise	<b>Coral Princess:</b> <b>May 28</b> ; Jun 11, 25; Jul 9, 23; Aug 6, 20; Sep 3					
	<b>QA7</b> After Cruise	<b>Sapphire Princess:</b> <b>May 19</b> ; Jun 2, 16, 30; Jul 14, 28; Aug 11, 25					
<b>Q</b> 14 Nights	7-day Voyage of the Glaciers cruise	2 nights Denali Princess Wilderness Lodge Natural History Tour	2 nights Fairbanks Sternwheeler Riverboat Cruise & Gold Mine Tour	1 night Coldfoot	1 night Prudhoe Bay	1 night Anchorage	Interior fares from <sup>^</sup> <b>\$2,598</b> Balcony fares from <sup>^</sup> <b>\$3,198</b>
	<b>QB7</b> Before Cruise	<b>Island Princess:</b> Jun 6, 20; Jul 4, 18; Aug 1, 15, 29					

After Cruise = land tour after cruise; Before Cruise = land tour before cruise.



# Connoisseur

Escorted by a tour director with most meals included

This is the ultimate Alaska cruisetour — treat yourself to the highest level of service on deluxe escorted itineraries with a tour director. Spend 5 to 8 nights on land, visiting Denali as well as sensational places like Copper River and Wrangell–St. Elias National Park or the Kenai Peninsula.

- 7-day Voyage of the Glaciers cruise
- At least two nights in the Denali area
- Options to the Kenai Peninsula or Wrangell–St. Elias National Park
- Princess rail service
- Most meals included
- Stays at Princess wilderness lodges
- Tour director on land tour
- Tundra Wilderness Tour into Denali National Park
- Sternwheeler Riverboat Cruise and Gold Mine Tour in Fairbanks (if applicable)



<b>R</b> 12 Nights	7-day Voyage of the Glaciers cruise	2 nights Denali Princess Wilderness Lodge Tundra Wilderness Tour	2 nights Mt. McKinley Princess Wilderness Lodge	1 night Anchorage		Interior fares from <sup>^</sup> <b>\$2,048</b>
						Balcony fares from <sup>^</sup> <b>\$2,648</b>
						<b>RA5</b> After Cruise <b>Island Princess:</b> May 23; Jun 6, 20; Jul 4, 18; Aug 1, 15, 29; Sep 12 <b>Coral Princess:</b> <b>May 14</b> , 28; Jun 11, 25; Jul 9, 23; Aug 6, 20; Sep 3 <b>Diamond Princess:</b> May 26; Jun 9, 23; Jul 7, 21; Aug 4, 18; Sep 1 <b>Sapphire Princess:</b> May 19; Jun 2, 16, 30; Jul 14, 28; Aug 11, 25; Sep 8
<b>S</b> 13 Nights	7-day Voyage of the Glaciers cruise	2 nights Mt. McKinley Princess Wilderness Lodge	2 nights Denali Princess Wilderness Lodge Tundra Wilderness Tour	2 nights Fairbanks Sternwheeler Riverboat Cruise & Gold Mine Tour		Interior fares from <sup>^</sup> <b>\$2,348</b>
						Balcony fares from <sup>^</sup> <b>\$2,948</b>
						<b>SA6</b> After Cruise <b>Coral Princess:</b> <b>May 14</b> , 28; Jun 11, 25; Jul 9, 23; Aug 6, 20; Sep 3
<b>T</b> 15 Nights	7-day Voyage of the Glaciers cruise	2 nights Kenai Princess Wilderness Lodge	2 nights Copper River Princess Wilderness Lodge	2 nights Denali Princess Wilderness Lodge Tundra Wilderness Tour	2 nights Fairbanks Sternwheeler Riverboat Cruise & Gold Mine Tour	Interior fares from <sup>^</sup> <b>\$2,723</b>
						Balcony fares from <sup>^</sup> <b>\$3,323</b>
						<b>TA8</b> After Cruise <b>Island Princess:</b> <b>May 23</b> ; Jun 6, 20; Jul 4, 18; Aug 1, 15, 29
<b>U</b> 15 Nights	7-day Voyage of the Glaciers cruise	3 nights Kenai Princess Wilderness Lodge	1 night Mt. McKinley Princess Wilderness Lodge	2 nights Denali Princess Wilderness Lodge Tundra Wilderness Tour	2 nights Fairbanks Sternwheeler Riverboat Cruise & Gold Mine Tour	Interior fares from <sup>^</sup> <b>\$3,073</b>
						Balcony fares from <sup>^</sup> <b>\$3,798</b>
						<b>UA8</b> After Cruise <b>Coral Princess:</b> <b>May 28</b> ; Jun 11, 25; Jul 9, 23; Aug 6, 20; Sep 3
<b>NEW</b> 	<b>UB8</b> Before Cruise	<b>Island Princess:</b> May 22; Jun 5, 19; Jul 3, 17, 31; Aug 14, 28 <b>Diamond Princess:</b> May 25; Jun 8, 22; Jul 6, 20; Aug 3, 17, 31	<b>Coral Princess:</b> May 27; Jun 10, 24; Jul 8, 22; Aug 5, 19; Sep 2	<b>Sapphire Princess:</b> Jun 1, 15, 29; Jul 13, 27; Aug 10, 24; Sep 7		

<sup>^</sup>Princess reserves the right to impose a fuel supplement of up to \$9 per person per day on all passengers if the NYMEX oil price exceeds \$70 per barrel, even if the fare has already been paid in full. Government fees and taxes of up to \$145 per person are additional and subject to change. Fares based on bolded departures dates. Certain restrictions apply. See page 7 for details.

7  
Days

# Voyage of the Glaciers

Sail between Vancouver, B.C., Canada and Anchorage (Whittier), Alaska



## Northbound

Saturday Departures

**Diamond Princess®**, **Sapphire Princess®**

Monday Departures

Wednesday Departures

**Coral Princess®**

**Island Princess®**

**Vancouver, B.C.**, Ketchikan, Juneau, Skagway, scenic cruising *Glacier Bay National Park*, scenic cruising *College Fjord*, **Anchorage (Whittier)**

### 2012 Departure Dates

Diamond Princess	Sapphire Princess	Coral Princess	Island Princess
May 26	May 19	May 14	May 23
Jun 09	Jun 02	May 28	Jun 06
Jun 23	Jun 16	Jun 11	Jun 20
Jul 07	Jun 30	Jun 25	Jul 04
Jul 21	Jul 14	Jul 09	Jul 18
Aug 04	Jul 28	Jul 23	Aug 01
Aug 18	Aug 11	Aug 06	Aug 15
Sep 01	Aug 25	Aug 20	Aug 29
Sep 15	Sep 08	Sep 03	Sep 12

### Launch Fares

Interior fares from	\$649*
Oceanview fares from	\$799*
Balcony fares from	\$1,249*
Mini-suite fares from	\$1,449*

## Southbound

Saturday Departures

**Diamond Princess®**, **Sapphire Princess®**

Monday Departures

Wednesday Departures

**Coral Princess®**

**Island Princess®**

**Anchorage (Whittier)**, scenic cruising *Hubbard Glacier*, scenic cruising *Glacier Bay National Park*, Skagway, Juneau, Ketchikan, **Vancouver, B.C.**

### 2012 Departure Dates

Diamond Princess	Sapphire Princess	Coral Princess	Island Princess
Jun 02	May 26	May 21	May 30
Jun 16	Jun 09	Jun 04	Jun 13
Jun 30	Jun 23	Jun 18	Jun 27
Jul 14	Jul 07	Jul 02	Jul 11
Jul 28	Jul 21	Jul 16	Jul 25
Aug 11	Aug 04	Jul 30	Aug 08
Aug 25	Aug 18	Aug 13	Aug 22
Sep 08	Sep 01	Aug 27	Sep 05
Sep 15	Sep 10	Sep 19	

### Launch Fares

Interior fares from	\$699*
Oceanview fares from	\$849*
Balcony fares from	\$1,299*
Mini-suite fares from	\$1,499*

\*Princess reserves the right to impose a fuel supplement of up to \$9 per person per day on all passengers if the NYMEX oil price exceeds \$70 per barrel, even if the fare has already been paid in full. Government fees and taxes of up to \$95 per person are additional and subject to change. Northbound fares are based on 5/14/12 sailing. Southbound fares are based on 9/19/12 sailing. Certain restrictions apply. See page 7 for details.



Orca pod swimming in Prince William Sound, Alaska



## 7 Days Inside Passage

**Island Princess®**  
**Diamond Princess®**  
**Sapphire Princess®**

**Vancouver, B.C.**, Juneau, Skagway, scenic cruising *Glacier Bay National Park* or *Tracy Arm Fjord*, Ketchikan, **Vancouver, B.C.**

### 2012 Departure Dates

Island Princess	Diamond Princess
May 16	Wed May 19
Sep 22	Sat

### Launch Fares

Interior fares from	\$749*
Oceanview fares from	\$924*
Balcony fares from	\$1,274*
Mini-suite fares from	\$1,399*

\*Princess reserves the right to impose a fuel supplement of up to \$9 per person per day on all passengers if the NYMEX oil price exceeds \$70 per barrel, even if the fare has already been paid in full. Government fees and taxes of up to \$100 per person are additional and subject to change. Fares based on 5/16/12 sailing. Certain restrictions apply. See page 7 for details.



**Captain's Circle  
Launch Savings**

For a limited time, past passengers can **save up to \$100 per person** and enjoy a **2-for-1 deposit** on any cruise\*

**Details on  
inside cover**



**7 Days Inside Passage**

Golden Princess\*

Seattle, Juneau, Skagway, scenic cruising Glacier Bay National Park or Tracy Arm Fjord, Ketchikan, Victoria, B.C., Seattle

2012 Saturday Departure Dates

May 26	Jul 28**
Jun 02**	Aug 04
Jun 09	Aug 11**
Jun 16**	Aug 18
Jun 23	Aug 25**
Jun 30**	Sep 01
Jul 07	Sep 08**
Jul 14**	Sep 15
Jul 21	

Launch Fares

Interior fares from	\$624*
Oceanview fares from	\$799*
Balcony fares from	\$1,149*
Mini-suite fares from	\$1,274*



**7 Days Inside Passage**

Star Princess\*

Seattle, Ketchikan, scenic cruising Tracy Arm Fjord, Juneau, Skagway, Victoria, B.C., Seattle

2012 Sunday Departure Dates

May 20	Jul 22
May 27	July 29
Jun 03	Aug 05
Jun 10	Aug 12
Jun 17	Aug 19
Jun 24	Aug 26
Jul 01	Sep 02
Jul 08	Sep 09
Jul 15	Sep 16

Launch Fares

Interior fares from	\$649*
Oceanview fares from	\$824*
Balcony fares from	\$1,174*
Mini-suite fares from	\$1,299*

\*\*Tracy Arm Fjord replaces Glacier Bay National Park.

\*Princess reserves the right to impose a fuel supplement of up to \$9 per person per day on all passengers if the NYMEX oil price exceeds \$70 per barrel, even if the fare has already been paid in full. Government fees and taxes of up to \$125 per person are additional and subject to change. Fares based on 9/08/12 sailing. Certain restrictions apply. See bottom of the page for details.

\*Princess reserves the right to impose a fuel supplement of up to \$9 per person per day on all passengers if the NYMEX oil price exceeds \$70 per barrel, even if the fare has already been paid in full. Government fees and taxes of up to \$110 per person are additional and subject to change. Fares based on 9/16/12 sailing. Certain restrictions apply. See bottom of the page for details.



**10 Days Inside Passage**

Sea Princess\*

San Francisco, Juneau, Skagway, scenic cruising Glacier Bay National Park, Ketchikan, Victoria, B.C., San Francisco

2012 Departure Date

May 13	Sun	Jul 12*	Thu
May 23*	Wed	Jul 22*	Sun
Jun 02**	Sat	Aug 01*	Wed
Jun 12	Tue	Aug 11**	Sat
Jun 22*	Fri	Aug 21	Tue
Jul 02	Mon	Aug 31*	Fri

Launch Fares

Interior fares from	\$999*
Oceanview fares from	\$1,599*
Balcony fares from	\$1,999*
Mini-suite fares from	\$3,034*

\* Tracy Arm Fjord replaces Glacier Bay National Park.

° Haines replaces Skagway.

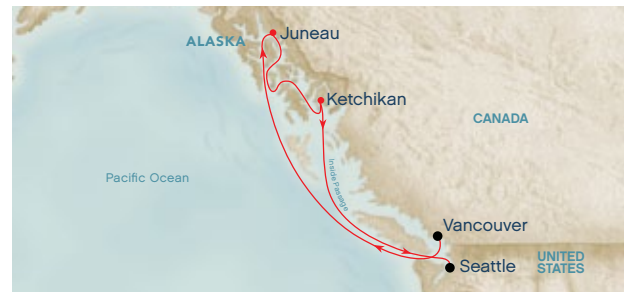
Please note that port order varies by itinerary.

\*Princess reserves the right to impose a fuel supplement of up to \$9 per person per day on all passengers if the NYMEX oil price exceeds \$70 per barrel, even if the fare has already been paid in full. Government fees and taxes of up to \$115 per person are additional and subject to change. Fares based on 5/13/12 sailing. Certain restrictions apply. See below for details.

\*Lead-in fares are based on the lowest category stateroom for each category type. Oceanview staterooms may have an obstructed view. Launch fares represent the lead-in introductory fares and are subject to change. Launch fares and other amounts shown are in U.S. dollars unless stated otherwise; are available in North America only. Rates shown are per person, cruise or cruisetour-only, based on double occupancy and do not apply to singles or third/fourth berth passengers; contact Princess Cruises for third/fourth-berth passenger fares.

The offer is based on space availability, is capacity controlled and applies to the sailing dates and stateroom categories shown on each itinerary. Fares may remain at a discounted level after this promotion. See the applicable 2012-2013 Princess Cruises brochure or princess.com for terms, conditions and definitions that apply to all bookings.

The contents of this brochure are accurate as of the date of printing and are subject to change. Please refer to princess.com for up-to-date information.



**5 Days Alaska Sampler**

Star Princess\*

Vancouver B.C., Juneau, Ketchikan, Seattle

2012 Departure Date

May 15	Tue
--------	-----

Launch Fares

Interior fares from	\$499*
Oceanview fares from	\$649*
Balcony fares from	\$999*
Mini-suite fares from	\$1,149*

\*Princess reserves the right to impose a fuel supplement of up to \$9 per person per day on all passengers if the NYMEX oil price exceeds \$70 per barrel, even if the fare has already been paid in full. Government fees and taxes of up to \$105 per person are additional and subject to change. Certain restrictions apply. See below for details.

# See even more with Princess shore and land excursions

Our excursion program covers all the top highlights and activities in every place you visit — from helicopter tours, to hiking and kayaking, to wildlife viewing. Plus, when you choose Princess' excursions, you have the confidence of knowing all tours and operators meet our own high standards for content, consistency and safety. Here's just a sample:

## Activities & Adventures

**Anchorage:** Glacier Discovery Train & Float

**Coldfoot:** Anaktuvuk Pass Adventure

**Copper River:** Scenic Wilderness Rafting

**Denali:** Nenana Gorge Whitewater Rafting

**Juneau:** Dog Sledding on the Mendenhall Glacier

**Kenai:** Kenai River Scenic Float

**Ketchikan:** Rainforest Canopy & Zipline Expedition

**Skagway:** Chilkoot Trail Hike & Float Adventure

**Talkeetna/McKinley:** Devil's Canyon Adventure

## Nature & Wildlife

**Anchorage:** Glacier Catamaran Cruise

**Copper River:** Copper River Country Nature Tour

**Haines:** Alaska Nature & Wildlife Expedition

**Juneau:** Mendenhall Glacier & Whale Quest

**Kenai:** Kenai Fjords National Park Cruise

**Ketchikan:** Bering Sea Crab Fishermen's Tour

**Skagway:** Eagle Preserve Wildlife River Adventure by Jetboat

**Victoria:** Whale Watching Cruise

**Whittier:** Portage Glacier Cruise/Wildlife Conservation Center

Find more information about our excursions at: [princess.com/excursions](http://princess.com/excursions)



Glacier hiking in Alaska

## Sightseeing & City Tours

**Copper River:** Wrangell–St. Elias Air Panorama

**Fairbanks:** Evening in the North Pole

**Juneau:** Mendenhall Glacier & Salmon Hatchery Tour

**Kenai:** Explore Cooper Landing & Gold Panning

**Ketchikan:** Totem Bight State Park & Lumberjack Show Combo

**Seattle:** City Tour, Space Needle & Pike Place Market

**Skagway:** White Pass Scenic Railway

**Vancouver:** City Highlights Drive & Stanley Park Visit

**Victoria:** City Highlights, Craigdarroch Castle & Mt. Tolmie

## Special Interest

**Denali:** Music of Denali Dinner Theatre

**Fairbanks:** El Dorado Gold Mine

**Haines:** Chilkoot Lake Freshwater Fishing

**Juneau:** Original Alaska Salmon Bake

**Kenai:** Alaska Husky Spirit

**Ketchikan:** Alaska Sportfishing Expedition

**Skagway:** Klondike Gold Fields, Panning & Exclusive Scenic Railway

**Talkeetna/McKinley:** Sun Dog Kennels

**Victoria:** Enchanting Butchart Gardens

## Book your flights with Princess eZAir®



**Competitive fares**, plus benefits no other airline ticket can offer:

- Next Port Protection
- Cancellation fees protected (when you choose Princess Vacation Protection)

You choose your airline and flight times — we make it easy:

For more details, visit [princess.com/ezair](http://princess.com/ezair)

## Enhance your vacation with a Cruise Plus® Hotel Package

Make a great vacation even better with a Cruise Plus Hotel Package. Add a few extra days, before or after your cruise and take in the sights of an incredible city while staying in fabulous accommodations selected by Princess for their incredible locations and excellent service. Plus, Princess handles all the details — including transfers and baggage handling.

For more details, visit [princess.com](http://princess.com)

**Princess Vacation Protection** assures your peace of mind. Details at [www.princess.com](http://www.princess.com).



# Escape Completely® with Princess®

When you sail with Princess, you'll discover a relaxed, rejuvenating retreat at sea that transports you far from your everyday routine. Enjoy warm, welcoming service, tantalizing cuisine prepared from scratch, incredible entertainment and an array of engaging activities day and night. There's no better way to explore new destinations than with Princess Cruises — the Consummate Host.®



**The Piazza**, the central gathering spot on each ship, welcomes guests day and night with live music & entertainment, plus relaxing spots for coffee, a drink, even complimentary casual fare from the International Cafe, available all day long.



**Princess cuisine** is lovingly prepared from scratch each day, wherever on the ship you dine. [princess.com/cuisine](http://princess.com/cuisine)



**Movies Under the Stars**® a Princess original, features films, concerts and more poolside on a giant screen. [princess.com/retreat](http://princess.com/retreat)



**The Sanctuary** is our signature haven for adults featuring massages, lounge chairs, spa fare and more. [princess.com/retreat](http://princess.com/retreat)



**Well-appointed staterooms**, spacious suites and affordable balconies come with pleasing amenities. [princess.com/staterooms](http://princess.com/staterooms)



**Original musicals** are a hallmark of every cruise, with lavish productions and talented performers. [princess.com/activities](http://princess.com/activities)



**Sabatini's**™, our Italian restaurant, and the refined Crown Grill are among the specialty restaurants on board. [princess.com/dining](http://princess.com/dining)

If there's an ocean, Princess can take you there



Alaska



Asia, India & Africa



Australia & New Zealand



Canada & New England



Caribbean, Mexico & Pacific Coast



Europe



Hawaii, Tahiti & South Pacific



Panama Canal



South America & the Amazon



World Cruises

Contact your travel agent, call 1-800-PRINCESS or visit [princess.com](http://princess.com)



**PRINCESS CRUISES**

*escape completely®*

P.O. Box 947 Santa Clarita, CA 91380-9047



CANADIAN RESIDENTS: Fares are shown in U.S. dollars, and also available in Canadian dollars. Ask your agent or call Princess for details.

PAK12FP11007



©Princess Cruises 2011. Litho in USA.

**YOUR PROFESSIONAL TRAVEL AGENT:**